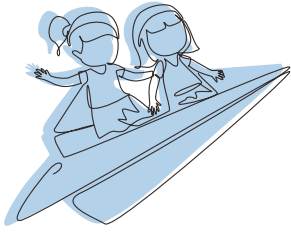


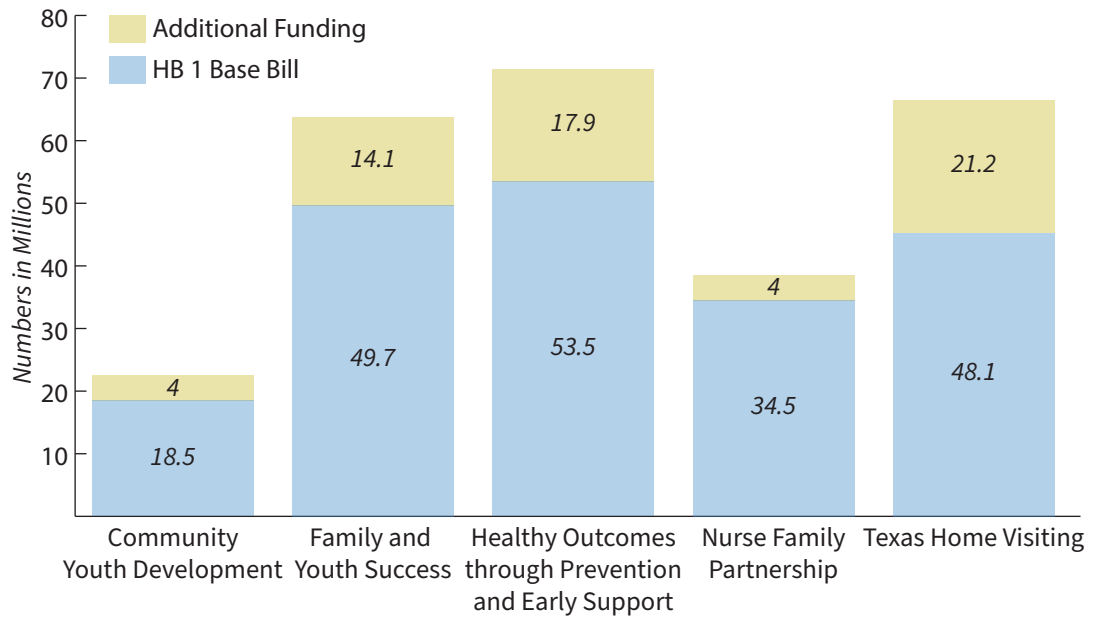
The 88th Texas Legislature

Budget Snapshot



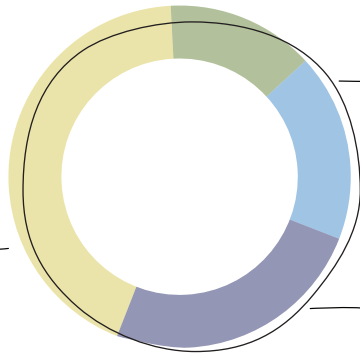
Prevention Services

A **\$61.2 million** increase for child maltreatment prevention programs



Mental Health

\$21.1 million to create an Intensive Psychiatric Stabilization Program (IPSP), which is a time-limited program to increase capacity for youth with complex mental health needs.



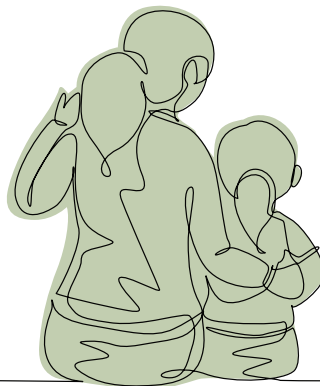
\$4.7 million for Psychiatric Youth Treatment Facility Voluntary Certification

\$6 million to fund three Youth Mobile Crisis Outreach Teams for DFPS kids

\$15 million for the innovation grant program created in Senate Bill 26 to support a variety of community-based organizations that improve access to mental health services for children

Family Preservation

\$15 million in federal Family First Transition Act (FFTA) funds to continue the Family Preservation Pilots established in Community Based Care regions.



Adoption

\$12 million of funding through the University of Texas to support the expansion of Heart Galleries statewide.

Kinship Care

\$4.3 million Reimburse concrete needs up to \$1000

\$1.1 million Enhanced Permanency Care Assistance payments

\$3 million Kinship-based mental health support in CBC regions

\$1.6 million Reimburse licensing costs

Directed DFPS to update the rate paid to unverified kin to 50% of the new modernized basic foster family rate once implemented.

Directs DFPS and HHSC to develop and adopt new and different licensing rules and standards for relative kinship foster family homes to allow more families to qualify for full foster care payments and maximize federal funds, once federal rules are adopted.

Specialized Care

\$5 million in federal FFTA for Qualified Residential Treatment Program (QRTP)

Over \$5 million in continued funding for grants to prevent child sex trafficking victimization, and to identify and support survivors

Foster Care

1. Sustain | \$62 million maintained supplemental rate increases

2. Increase | \$54 million “Bridge” rate increases targeting basic and moderate

3. Fully funded | Rate Modernization implementation and rates

**Provider Capacity Grants were not continued in the 2024-25 biennium*



Interoperability

\$10 million to complete upgrades to IMPACT and improve external interoperability.

\$4.9 million for SSCC Interoperability

Guidance to DFPS to determine how to transition IMPACT to a new, fully interoperable system.

This includes strategic planning, solicitation development, and readiness assessments.

Community-Based Care

Funded CBC expansion to four new regions, with 11 regions and an estimated **78% of children served** by 2025.

